

Contents

QuickGuide: EMS Upgrade	1
Step 1: Uninstall EMS desktop client from machine.	1
Step2: Install new EMS client to computer	2
Step 3: Check download version is correct	4
Step 4: Login using credentials.	5

QuickGuide: EMS Upgrade

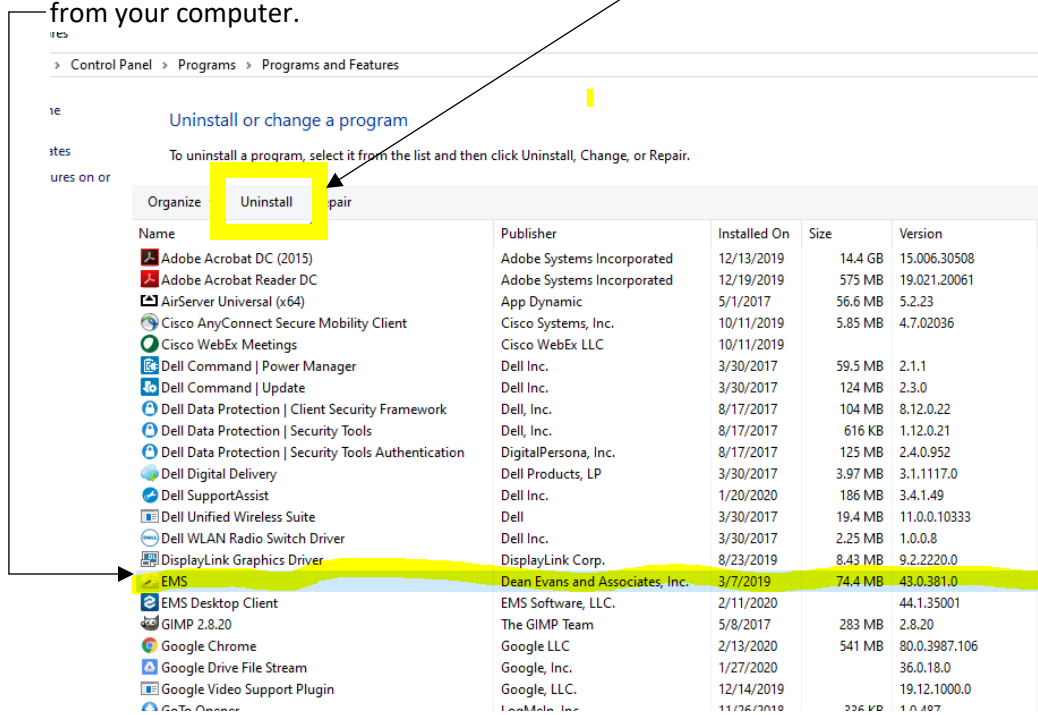
- EMS Upgrade from version [43.0.381.0 to 44.1.33.2](#) occurred on 02/14/20.
- Users will need to do a few things to add the new version to their computers, use this quick guide for reference.

Step 1: Uninstall EMS desktop client from machine.

- Go to Control Panel, and selected Uninstall a Program:



- Select EMS version 43.0.381.0 and then click uninstall, this will remove the original EMS version from your computer.

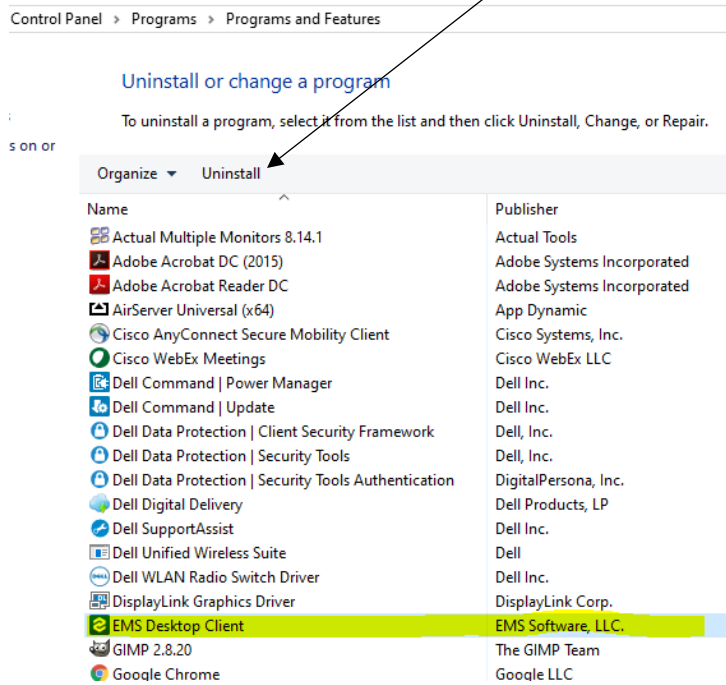


Step 2: If you TESTED EMS, you will need to Uninstall TEST EMS from computer. Otherwise SKIP this step.

- Go to Control Panel, and selected Uninstall a Program:

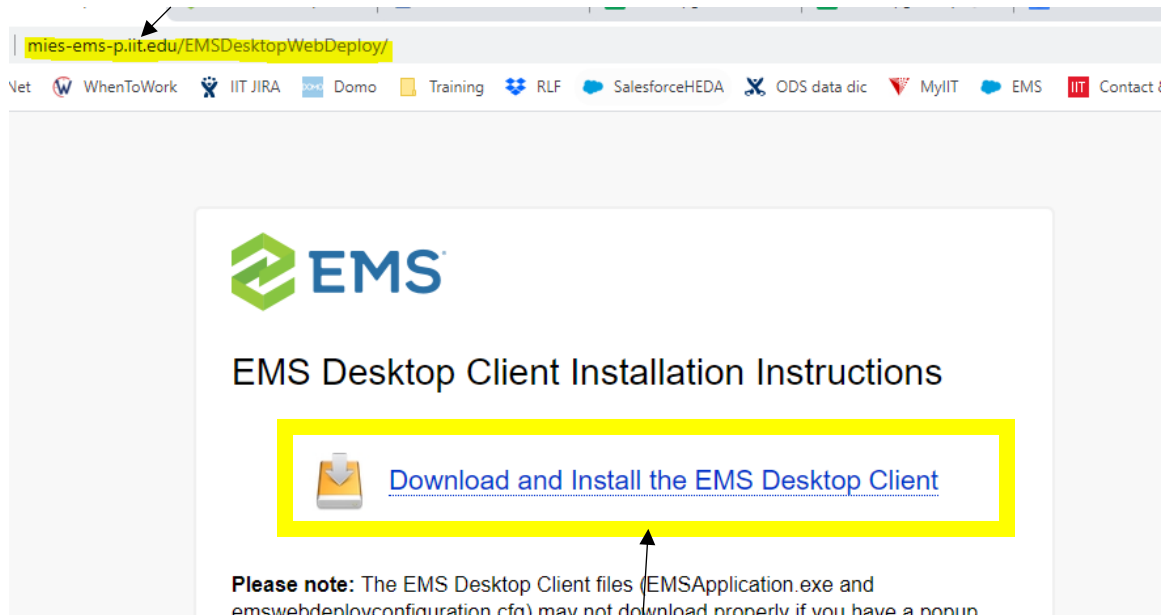


- Go to EMS Desktop Client and click Uninstall:



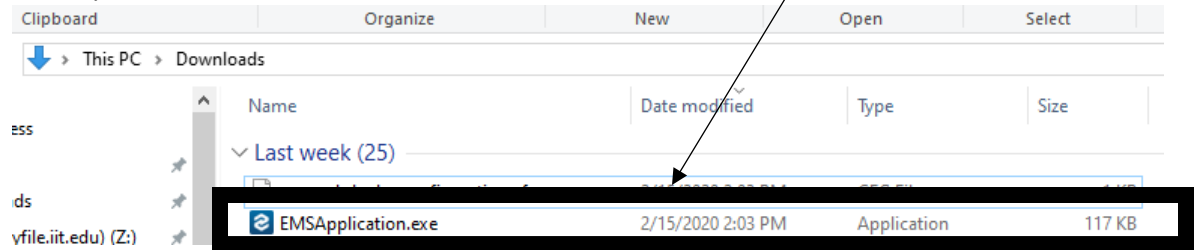
Step 3: Install new EMS client to computer

- Users need to visit:
<http://mies-ems-p.iit.edu/EMSDesktopWebDeploy/> - make sure the URL on the website is the SAME URL here:

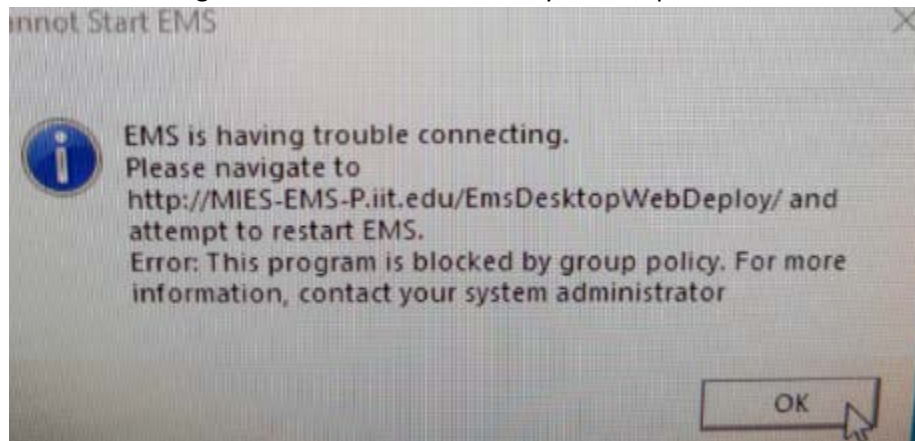


- Select: Download and Install the EMS Desktop Client.

- EMS will download TWO Files, a .exe and a .cfg file. Select EMSApplication.exe to install the new desktop client:



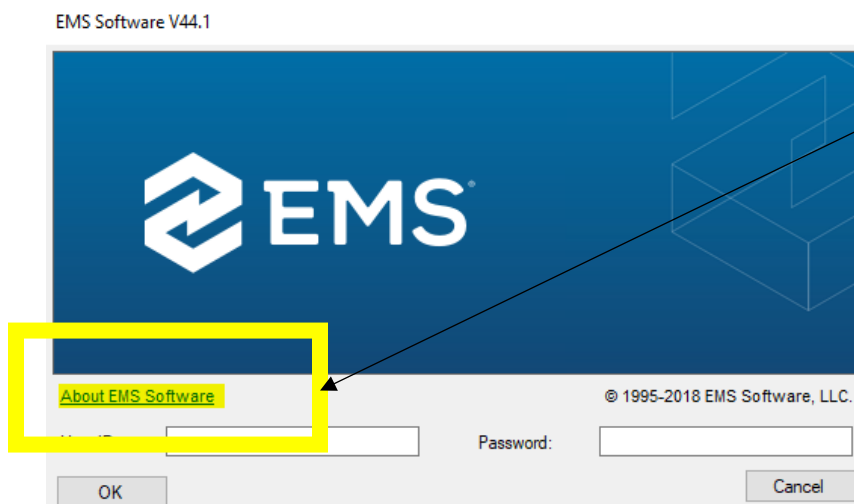
- If you receive an error when downloading to your computer, it means you do NOT have administrator rights to install this version on your computer:



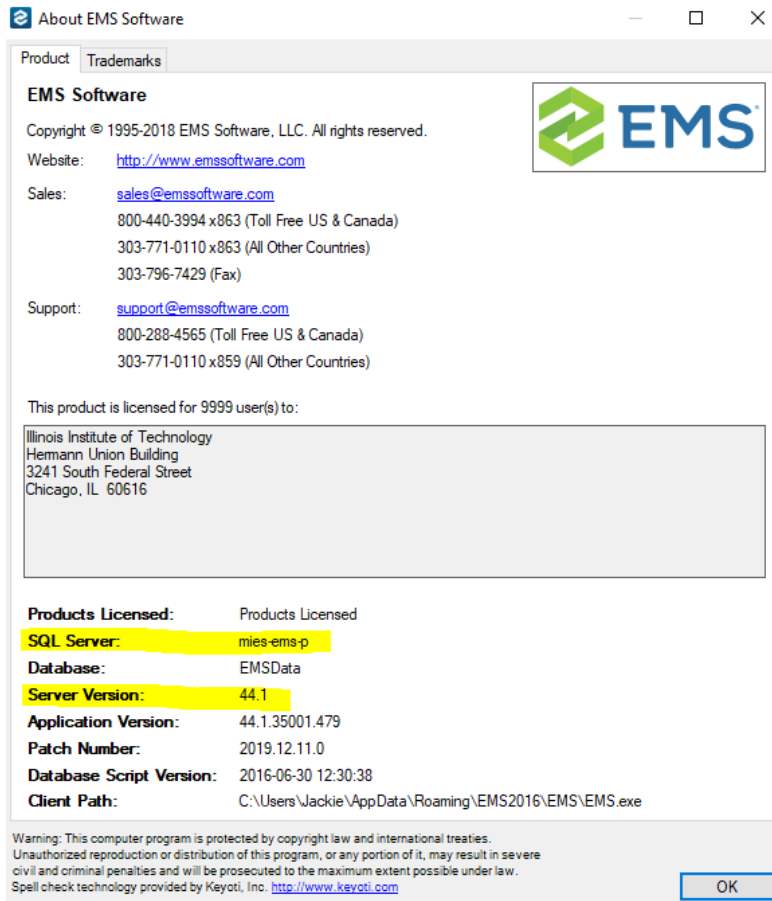
- You may contact the support desk for help installing the new version supportdesk@iit.edu.

Step 4: Once download completes, confirm new version is installed

- Click on EMS to open, you will be presented with the login screen, click on About EMS Software:



- Confirm EMS version is new version:



Step 5: Login to EMS using regular login credentials.

- If you are unable to access EMS, email events@iit.edu to request a password reset.