

Setting Up Remote Desktop Access

1. Confirm you are connected to VPN. If you are not or unsure how to do so, please [click here](#).

Activating Remote Desktop on your Computer

2. On your work computer:
 - a. Click the **Start** button.
 - b. Click **Settings**.
 - c. Click **System**.
 - d. Scroll down and click **Remote Desktop**.
 - e. Turn on **Enable Remote Desktop**.

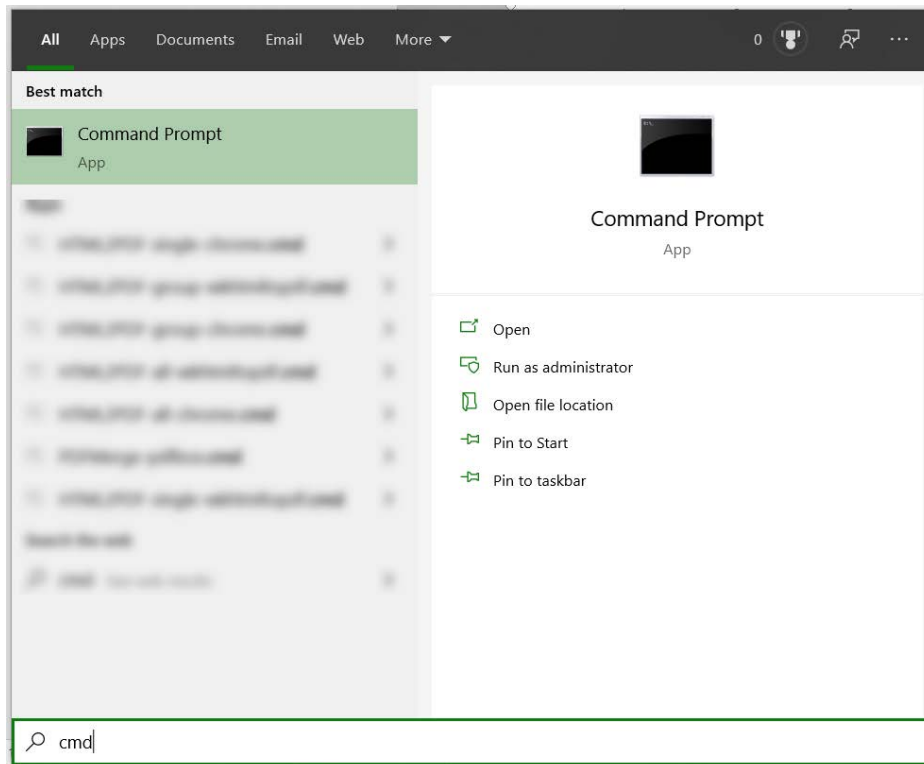
Enable Remote Desktop



- f. Click **Confirm**.

Determining Your Computer's IP Address

3. On your work computer:
 - a. Click the **Start** button.
 - b. Start typing "**Command**" and you will see the below.
 - c. Click **Command Prompt App**.



- d. In the command prompt, type in **ipconfig**
- e. You will need to write down your IPv4 Address. Last two sets of numbers have been blurred for privacy.

```
Command Prompt
Subnet Mask . . . . . : 255.255.255.0
Default Gateway . . . . . :

Wireless LAN adapter Local Area Connection* 1:

Media State . . . . . : Media disconnected
Connection-specific DNS Suffix . . . . . :

Wireless LAN adapter Local Area Connection* 2:

Media State . . . . . : Media disconnected
Connection-specific DNS Suffix . . . . . :

Ethernet adapter Ethernet:

Connection-specific DNS Suffix . . . . . : iit.edu
IPv6 Address. . . . . : 2620:f3:
Link-local IPv6 Address . . . . . : fe80::
IPv4 Address. . . . . : 216.47.
Subnet Mask . . . . . : 255.255.255.0
Default Gateway . . . . . : 216.47.152.2

Ethernet adapter Bluetooth Network Connection:

Media State . . . . . : Media disconnected
Connection-specific DNS Suffix . . . . . :

Wireless LAN adapter Wi-Fi:

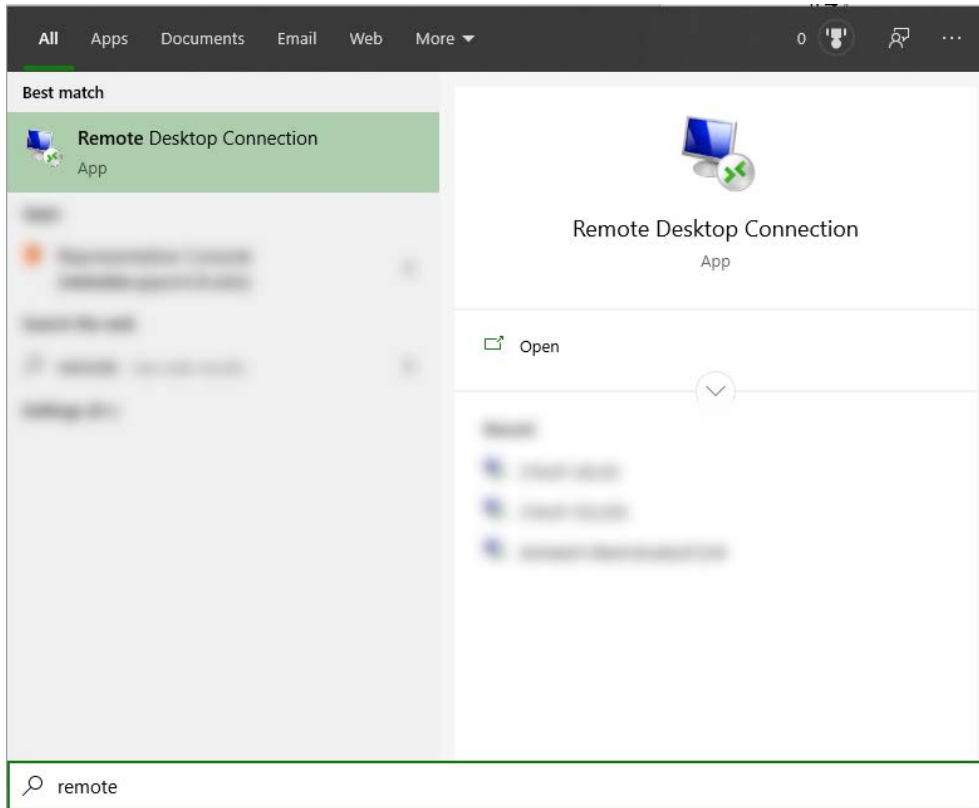
Media State . . . . . : Media disconnected
Connection-specific DNS Suffix . . . . . : iit.edu

C:\Users\Sean Knight>
```

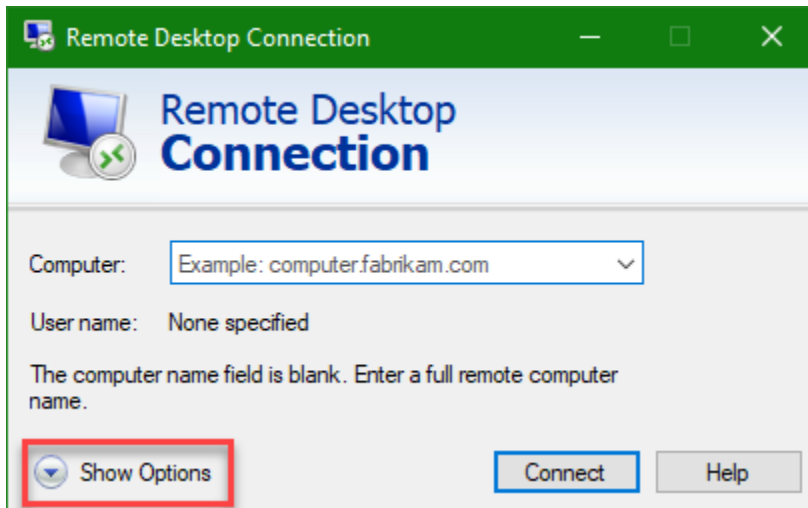
Accessing your work computer via the Remote Desktop Connection

4. On your home or personal computer:
 - a. Click the **Start** button.
 - b. Start typing **Remote Desktop**.

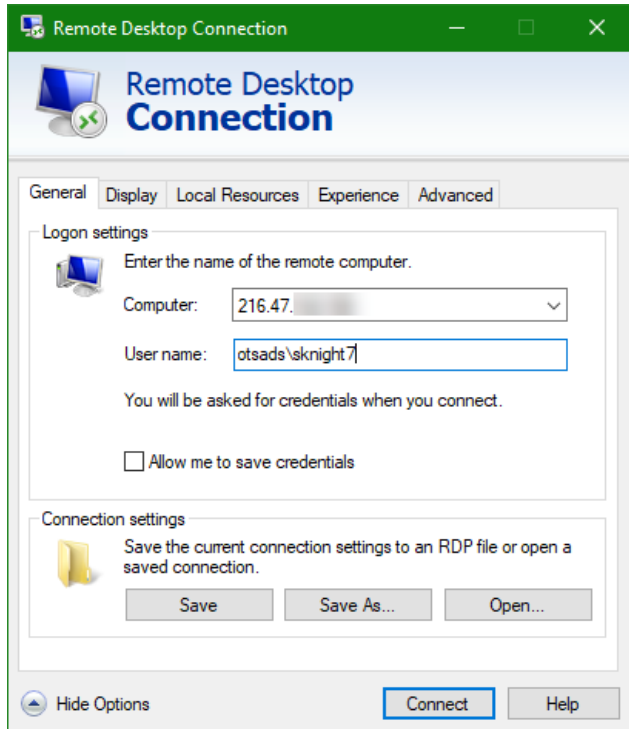
c. Click **Remote Desktop Connection App**.



d. Click **Show Options**.



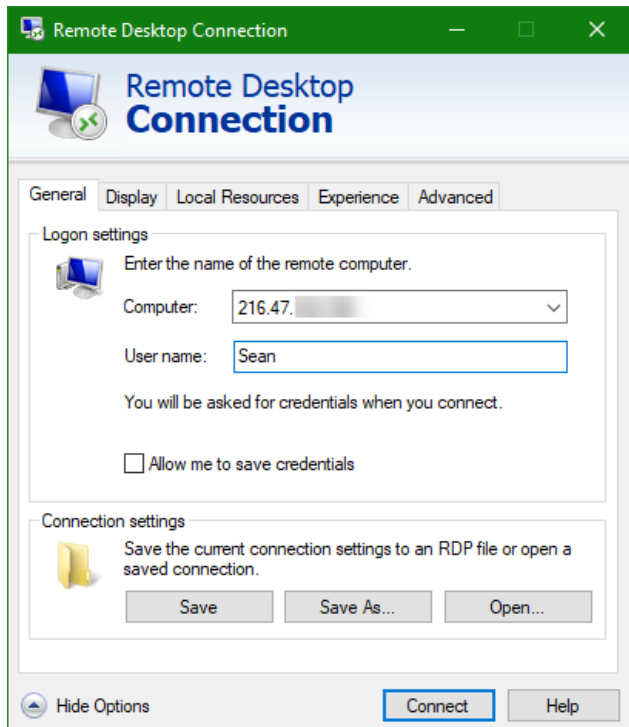
- e. Enter your IPv4 address in the **Computer** field. IP address has been partially blurred for privacy.



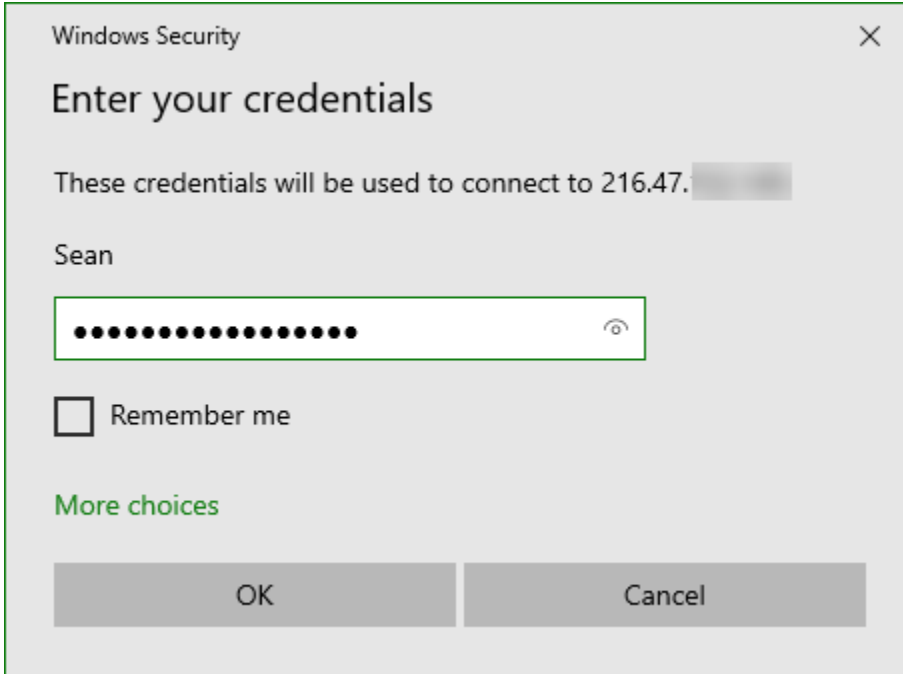
- f. If your work computer is on the domain, then enter **otsads\portal username**, as seen above.

For example, otsads\sknight7

- g. If your work computer is **not** on the domain, then just enter your username on the computer, as seen below.



- h. Click **Connect**.
- i. You will be prompted to enter your password.



If successful, you should see your work computer's desktop.

If you need assistance, please contact:

OTS Support Desk

Phone: 312-567-3375 (x7DESK)

Email: supportdesk@iit.edu

In-person: Galvin Library, Upper Level